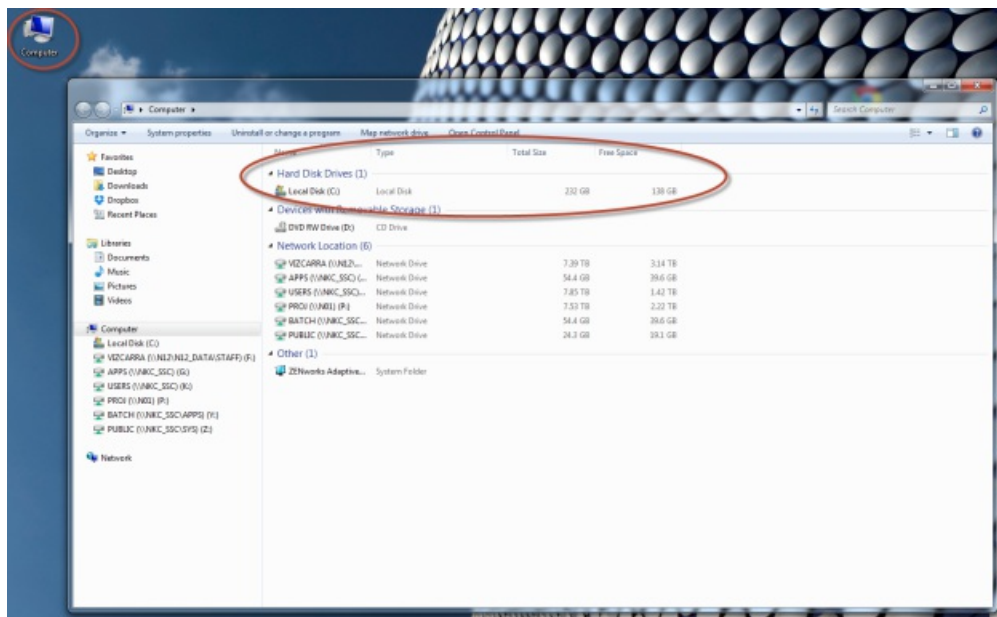


## How do I determine my disk space usage?

Article Number: 92 | Last Updated: Fri, Feb 16, 2018 at 10:40 AM

Use the following instructions to determine how much hard drive space you are currently using.

### Windows 7



From your desktop, double click on the **Computer** icon to display the list of drives associated to your computer.

Your **Local disk (C:)** is your computer hard drive and if you subtract the **Free Space** from the **Total Size** you will know how much space you are using. In this example there is 94GB of disk space being used.

#### IT Tidbit

You should always leave a minimum of 10% available disk space to allow for temporary file read/write access and to avoid unnecessary disk fragmentation would could become a problem later.

Posted by: Andy Fehr - Tue, Jul 22, 2014 at 12:21 PM. This article has been viewed 3364 times.

Online URL: <https://knowit.ok.ubc.ca/article/how-do-i-determine-my-disk-space-usage-92.html>