

How To Access Your EAD Home Drive

Article Number: 1052 | Last Updated: Mon, Jun 29, 2020 at 10:02 AM

Requirements:

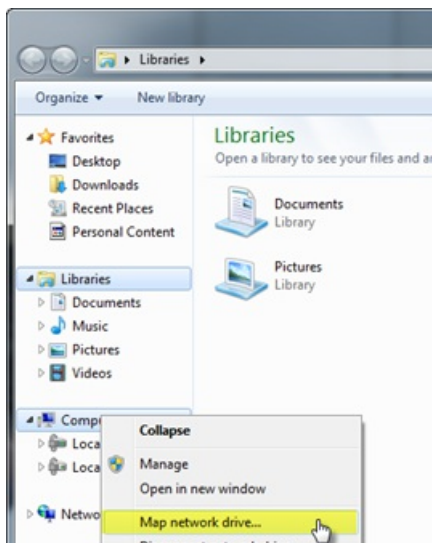
To connect to an Okanagan campus network file storage share, you must be using a computer that is connected to the campus network. This can be any of the following:

- Campus wired network
- Campus **ubcsecure** or **ubcprivate** wireless networks
- UBC VPN

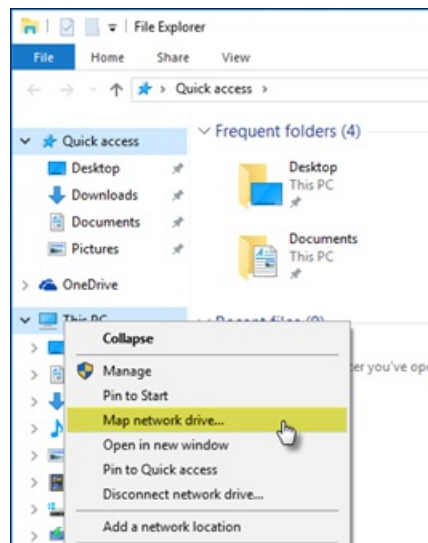
Instructions:

Windows [Self Service]

1. Windows 7 - In Windows Explorer, right click on **Computer** and select **Map network drive...**
Windows 10 - In Windows Explorer, right click on **This PC** and select **Map network drive...**



Windows 7



Windows 10

2. Choose a drive letter and, in the **Folder** field, enter \\ followed by the server and share information, separated by a back slash "\", from the following article:

For the Home Drive, use H Drive and \\files.ok.ubc.ca\cwl

[List of Okanagan campus file storage shares](#)

×

← Map Network Drive

What network folder would you like to map?

Specify the drive letter for the connection and the folder that you want to connect to:

Drive:

Folder:

Example: \\server\share

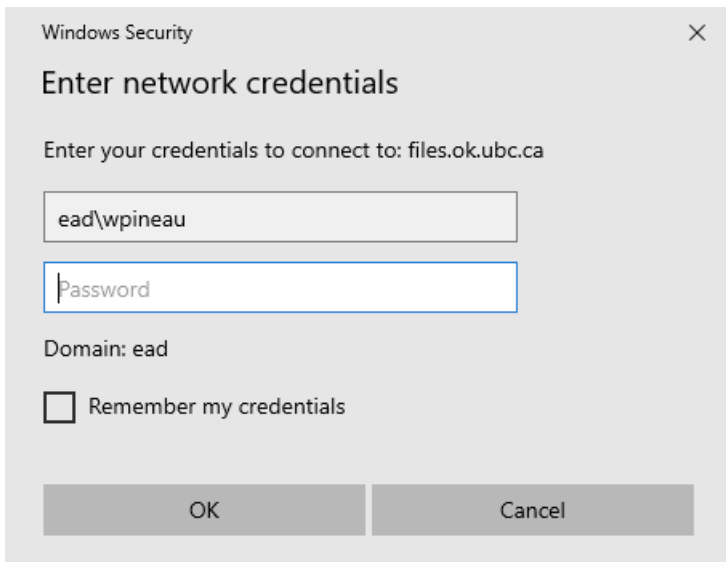
Reconnect at sign-in

Connect using different credentials

[Connect to a Web site that you can use to store your documents and pictures.](#)



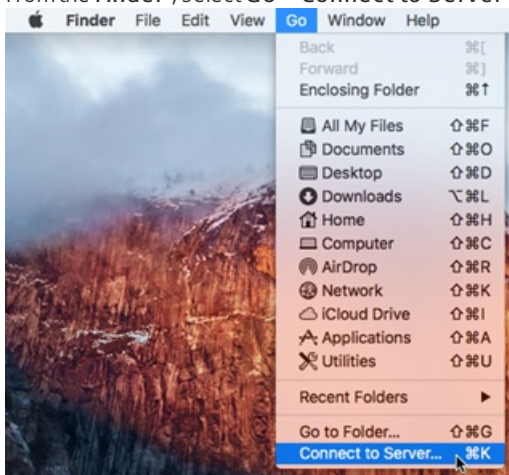
Make sure you choose Connect Using different credentials and type your ead\ credentials...



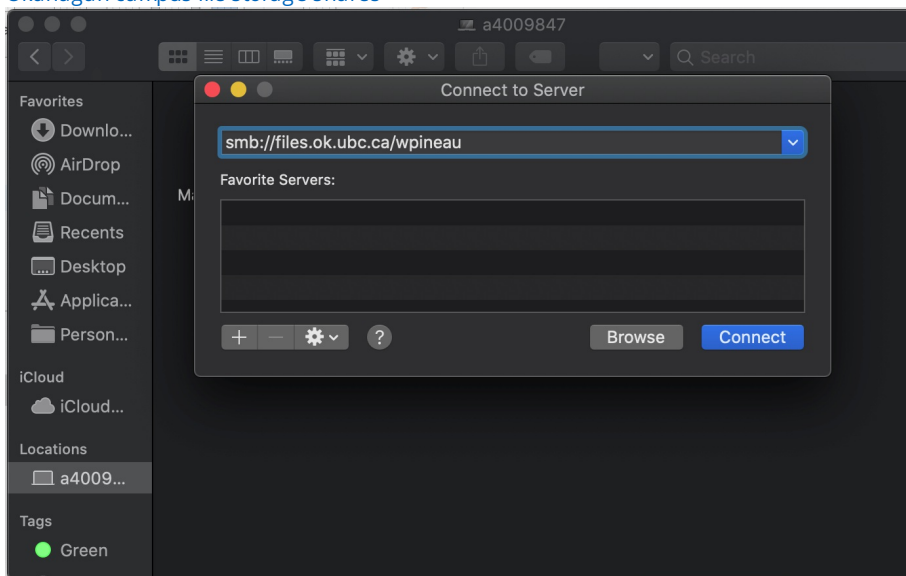
3. Click **Finish** to complete the connection.

OSX [Self Service]

1. From the **Finder**, select **Go > Connect to Server**.



2. Enter **smb://**, followed by the server and share information, separated by a forward slash "/", from the following article: [List of Okanagan campus file storage shares](#)



3. Click **Connect** to complete the connection.

Other [Self Service]

Nearly any computer that can connect to a SMB or CIFS share can connect to the Okanagan campus network file storage shares. Use the documentation for your operating system along with the information in the following article to connect: [List of Okanagan campus file storage shares](#)

For more information or assistance, please contact the [ITServices Helpdesk](#) - 250.807.9000 or 855.807.9001.

Posted by: Warren Pineau - Thu, Jun 18, 2020 at 4:33 PM. This article has been viewed 2259 times.

Online URL: <https://knowit.ok.ubc.ca/article/how-to-access-your-ead-home-drive-1052.html>