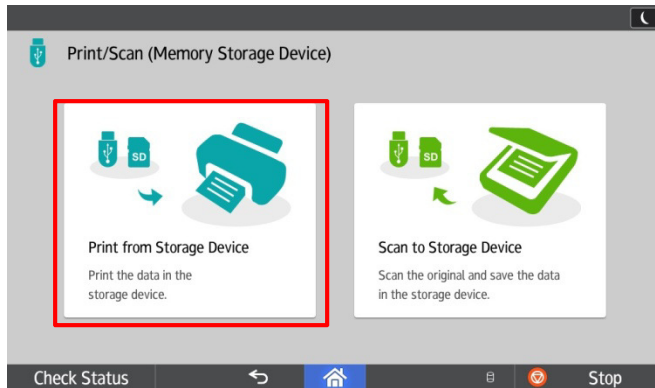
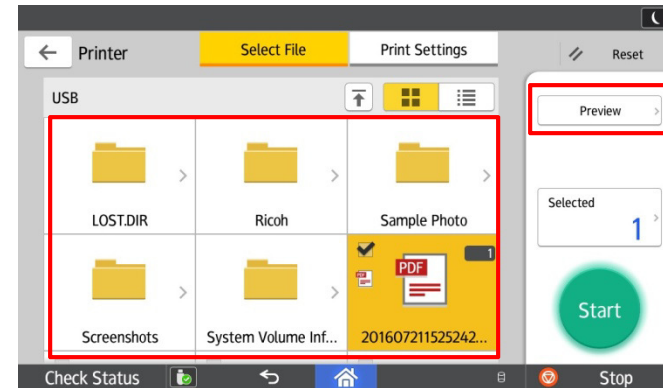


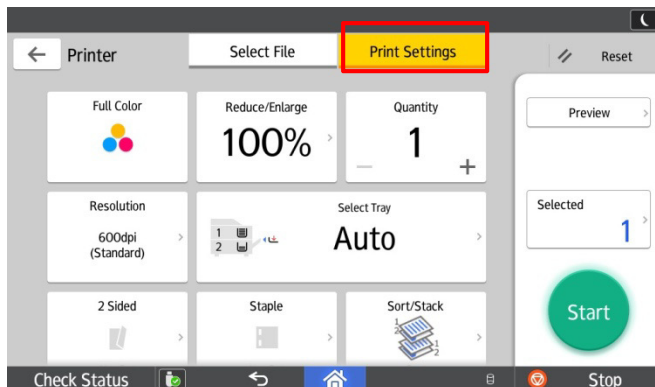
PRINT FROM USB QUICK REFERENCE GUIDE



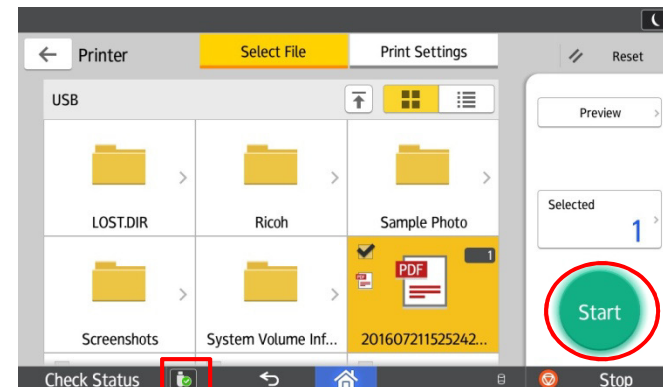
Press Print from Storage Device. On the next screen, select the device to be read.



Select the file to print from the list or folder. Press Preview to see the document before printing.



Press Print Settings to adjust your print job, such as adding Staples, Reducing/Enlarging, Sorting, etc.



Press Start to begin the Scan. After finish, eject the Memory Device by pressing the eject icon on the bottom of screen.